

**January Sale - Quote Ref: KSS071J for a 10% discount on KS Safety Membership
Valid Until March 2007 (See Page 4)**

Inside this issue:

Control of Asbestos Regulations	1
CDM Regulations 2007	2
Working With VDU's New Guidance	3
Health & Safety Starter Pack	3
Legionnaires Disease New Guidance	4
Contact Details	4
K.S. Safety Group	4

Control of Asbestos Regulations 2006

The Control of Asbestos Regulations 2006 came into force on the 13th of November 2006. The main changes to the Regulations are:-

“A licence is no longer required for the removal of Textured Coatings”

“A new single control limit of 0.1 f/ml over a 4 hr period has been introduced for all types of asbestos”

“A new Maximum Peak Level of 0.6 f/ml over a 10-min reference period has been introduced”

“Licence exemption has been withdrawn for employees working on their own premises”

“Action Levels have been withdrawn”

“All persons working with asbestos must be trained”

Training Is Now Mandatory for maintenance activities, non-licensed works, as well as licensed works.

Exemptions from this requirement would apply only where the employer can demonstrate that work will be carried out in or on a building free of asbestos containing materials (ACMs).

The asbestos training providers code of conduct has been accepted by *K.S.Safety Ltd*, and we shall be providing training courses as detailed in Group 2 and Group 3— namely non-licensed works training and awareness courses for maintenance workers.

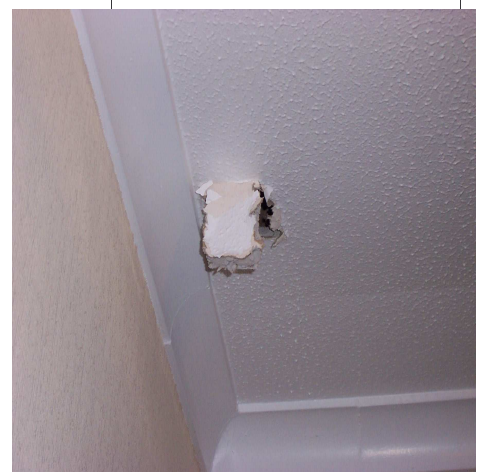
We are also able to deliver in-house training programmes, including Management of Asbestos In Buildings

K.S. Safety Ltd also conduct Asbestos Surveys of Properties.

Training Courses are programmed to run throughout January, February and March 2007. Please book early.

**Contact Karen Wilson for further details and course dates.
(01501) 749500**

Training must be provided to all demolition workers and those workers in the refurbishment, Maintenance and allied trades where it is foreseeable that their work will disturb the fabric of the building because ACM's may become exposed during their work.



Construction Design & Management (CDM) Regulations To Be Introduced In April 2007

Statistics released by the Health and Safety Executive for 2005/06 show the rate of fatal and major injuries in the construction industry is continuing to fall. The Health and Safety Statistics 2005/06 report shows:



- The rate of reported fatal injuries (to all workers, including the self employed) in construction between 1999/00 and 2005/06 has reduced by around 36%;
- The rate of reported major injuries to employees in construction between 1999/00 and 2005/06 has reduced by around 22%; and
- The rate of reported over three day injuries to employees in construction between 1999/00 and 2005/06 has reduced by around 31%.

The proposed new CDM Regulations have a basic requirement for all persons involved in construction work to be competent. This falls into three main groups:-

- the competence of organisations, including principal contractors, designers and co-ordinators. The competence assessments are likely to be carried out in two stages:
 - organisation and arrangements
 - experience and track record
- competence of professional duty holders, those working for the contractor and the self-employed
- competence of site workers e.g. as can be demonstrated by a touch screen test, NVQ/SVQ, CSCS/CPCS card.

“212 fatal injuries to workers in 2005/2006 of which 59 occurred within the construction industry”

K. S. Safety Ltd provide both on-site safety audits and health & safety awareness courses. Contact Karen Wilson for further details on (01501) 749500

UK Construction Statistics 2005/2006

“981 major injuries caused by slips, trips or falls on the same level”

“917 major injuries caused by falls from height”

“577 major injuries while handling, lifting or carrying”

“572 major injuries caused by being struck by a moving (including flying/falling) object”



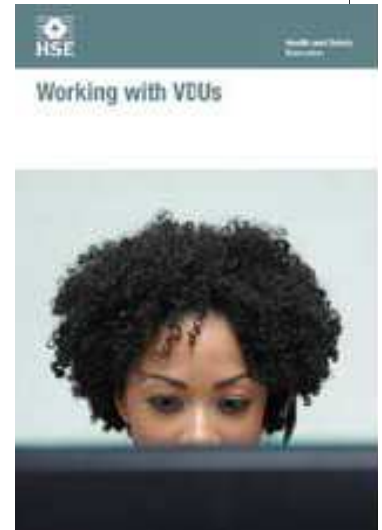
Working With VDU's

The HSE have released a new free guidance leaflet for people who work with visual display units and their employers. The leaflet:-

- ◆ answers questions that are most often asked about VDU's and health
- ◆ gives a summary of the law on VDU work (the health and safety (display screen equipment) Regulations 1992), and outlines what employers and employees should do to comply
- ◆ suggests some simple adjustments that users can make to workstations and screens to make them more comfortable and easy to use; and
- ◆ explains how employers and users can get further information.

The new guidance leaflet was revised in December 2006 and can be downloaded from <http://www.hse.gov.uk/pubns/indg36.pdf>

K. S. Safety Ltd provide assistance with all aspects of office safety. We are pleased to assist the self-employed, small and medium enterprises as well as larger corporate bodies and public organisations. Contact Karen Wilson for further details on (01501) 749500



Health And Safety Starter Pack

If you have recently set up in business or are new to health and safety designed to provide a comprehensive and low cost introduction to health and safety for new and small businesses.

Priced at just £35, the pack updated in 2006 contains most of the basic health and safety advice businesses need to help them comply with the law and protect their workers. It also includes copies of the HSE Accident Book and the Health and Safety Law Poster, which must be displayed in business premises, by law.

A full list of the contents of the pack is shown to the right. The pack is available from HSE Books (01787) 881165 ISBN 0-7176-6210-1 Priced £35.

K. S. Safety Ltd is a Consultancy providing a wide ranging Health, Safety and Hygiene Service to assist you in meeting the requirements of the Health and Safety at Work Act and its associated legislation. Contact Karen Wilson for further details on (01501) 749500



Polkemmet Business Park
Dixon Terrace
Whitburn
West Lothian, EH47 9LW

Office: 01 501 749500
Mobile: 0780 375773
Email: office.ks-safety@tiscali.co.uk

Good Health - Good Safety
Good Business



www.ks-safety.com

Legionnaires Disease (New Guidance Leaflet)

Barrow Borough Council has launched an inquiry into the legionnaires disease outbreak in Barrow during July/August 2002 which killed at least five people. The council's design service manager was cleared of manslaughter in July 2006, but she was fined £15,000 for breaching the Health and Safety at Work Act. Barrow Council also pleaded guilty to health and safety charges and was fined £125,000.

Outbreaks linked to poor management of wet cooling systems still occur; often leading to prosecutions by HSE. August 2006 saw 127 reported cases of Legionnaire's disease, a twofold increase on the figure for August. Up to the end of August 2006, there were 273 reported cases as opposed to 205 for the corresponding period in 2005.

The HSE released a new guidance leaflet in December 2006 which can be freely downloaded from the HSE website at <http://www.hse.gov.uk/pubns/web23.pdf>

K. S. Safety Ltd are equipped to assist you in conducting water hazard and risk assessments. Contact Karen Wilson for further information. (01501) 749500

K. S. Safety Ltd is a Consultancy providing a wide ranging Health, Safety and Hygiene Service to assist you in meeting the requirements of the Health and Safety at Work Act and its associated legislation. We are committed to giving you, our customer a high quality and professional service whatever the size of the assignment or circumstances.

You will find us to be adaptable, flexible and practical in our approach and you can be sure that we shall work closely with you so that you will obtain maximum benefit from our service.

Perhaps you would like to become a member of the **K.S. Safety Group**, where for a nominal annual fee (£200 + VAT)

- are updated regularly with respect to changes in legislation,
- will have the benefits of the readily available advice & guidance of a health & safety professional,
- benefit from a 10% discount on all of our course fees
- benefit from a reduced on-site hourly rate, from that of non-members

Contact Karen Wilson for further details (01501) 749500.